

FEARLESS

Recent works of Mary Rozzi

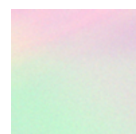
May, 2021



LAWRENCE ROTHMAN ALTER «LIZ» portrait of Lawrence Rothman,
Edition of 5 exemplaires
Photography, 120x120 cm

REMEDES GALERIE

143, rue du Temple
75003 Paris



To inaugurate **Remèdes Galerie**, we are proud to present the exhibition **FEARLESS**: a selection of recent works by American photographer and director, **Mary Rozzi**.

FEARLESS is the first solo exhibition of **Rozzi's** work, a show of 24 photographs presented in two stages. These photographs were taken largely as part of her editorial activity for her magazine *The September Issues*, a feminist art and fashion magazine she founded in 2016.

Printed in large formats and in limited editions of two to ten copies, these portraits testify to the artist's exploration of photographing women and non-binary subjects in relation to current debates on gender, identity and subjectivity in public discourse.

FEARLESS offers an evocative snapshot of our generation's aspirations to free itself from the limits and prejudices of outdated dictates on beauty, the femme, and empowerment. Rozzi's subjects include artists, singers, dancers, choreographers who embody their difference, their unconventional vision and their extraordinary personality with strength and gentleness. Through their artistic practices, they share their testimonies as an essential discussion for today.

Mary Rozzi, convinced that vulnerability is a strength, offers us portraits with a deeply optimistic perspective, celebrating difference, courage and freedom.

to be vulnerable is ...
Fearless

De la force dans la fragilité.
De la normalité dans l'anormalité.
De la force dans la vulnérabilité.
De l'éternité dans le temporel.
De la force dans la fragilité.
De la normalité dans l'anormalité.
De la force dans la vulnérabilité.
De l'éternité dans le temporel.
De la force dans la fragilité.
De la normalité dans l'anormalité.
De la force dans la vulnérabilité.
De l'éternité dans le temporel.

Les limites de soi, celles de l'époque.
La beauté. La solitude. L'interrogation de la féminité.
Le féminisme. La maladie. L'imperceptible.

La
LIBERTÉ
Le
CONTRAIRE



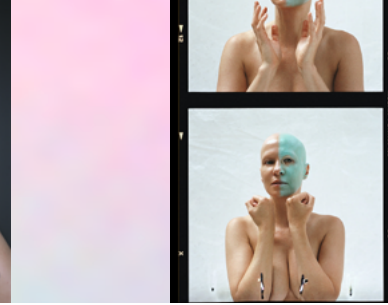
BINTOU DEMBELE I
Photography, 110x160 cm - 43x63 in



LAWRENCE ROTHMAN ALTER «LIZ»
Photography, 120x120 cm - 47x47 in



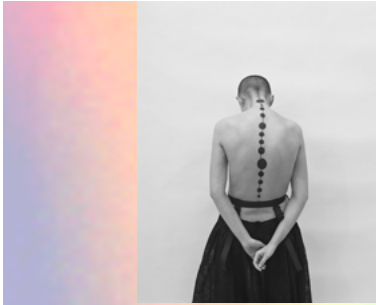
MILLIE BROWN
Photography, 120x105 cm - 47x41 in



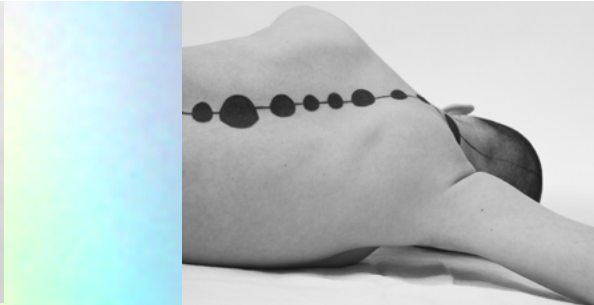
SARAH THE GREAT
Photography, 100x70 cm - 39x28 in



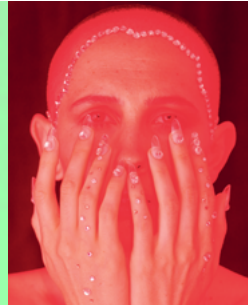
ANNE PLAMONDON CHANNELS CINDY
Photography, 120x95 cm - 47x37 in



THERE ARE NO COINCIDENCES I
Photographie, 50x40 cm



THERE ARE NO COINCIDENCES II
Photography, 50x40 cm - 20x16 in



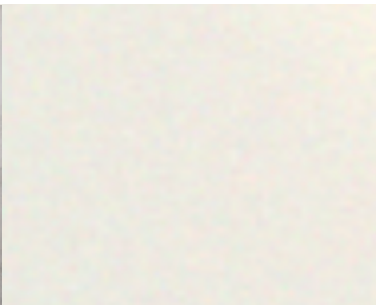
ANIA CATHERINE
Photography, 63x50 cm - 25x20 in



GRAVITY I
Photography, 85x130 cm - 34x51 in



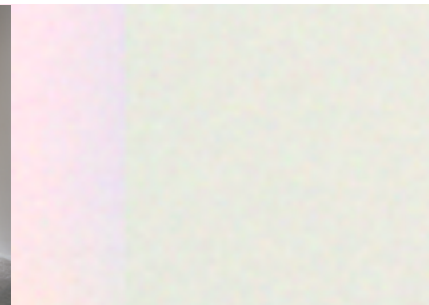
PEAKS
Photography, 100x80 cm - 39x32 in



GRAVITY III
Photography, 125x100 cm - 49x39 in



GRAVITY II
Photography, 145x120 cm - 57x47 in



BINTOU DEMBELE II
Photography, 145x120 cm - 57x47 in



WINNIE
Photography, 105x160 cm - 41x63 in



YVES KLEIN BLUE
Photography, 70x55 cm - 28x22 in



LAWRENCE ROTHMAN ALTER «ORION»
Photography, 120x100 cm - 47x39 in



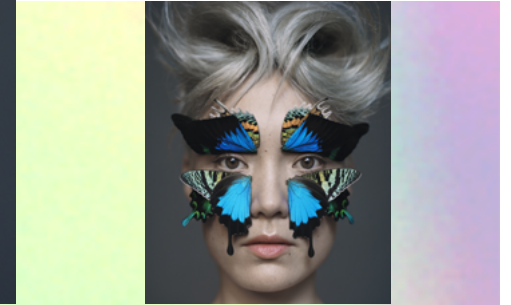
LIL NAS X
Photography, 140x110 cm - 55x43 in



LIA PARIS
Photography, 105x160 cm - 41x63 in



THE MARRIAGE OF MINDS II
Photography, 110x90 cm - 43x35 in



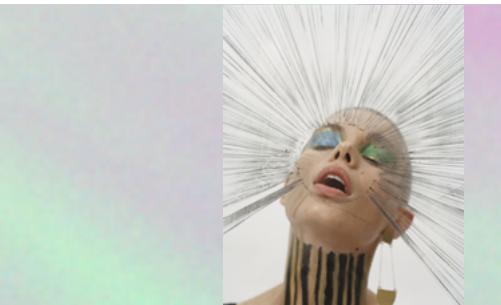
POM KLEMENTIEFF
Photography, 150x120 cm - 59x47 in



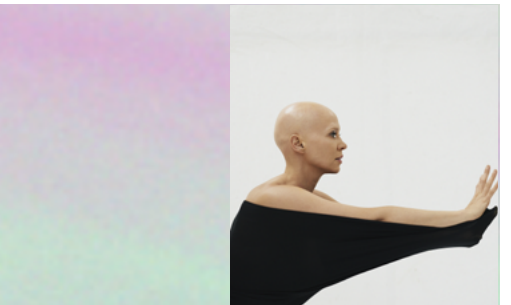
LIL NAS X WITH FLOWER CROWN
Photography, 120x100 cm - 47x39 in



WHERE HAVE YOU GONE
Photography, 110x160 cm - 43x63 in



THE MARRIAGE OF MINDS III
Photography, 115x90 cm - 45x35 in



LUCY SWEETCHURCH PT IV
Photography, 110x90 cm - 43x35 in

Mary Rozzi Born in Los Angeles in 1970, Rozzi is an American Italian fashion and celebrity photographer and director.

Rozzi attended Parsons School of Design in New York, before assisting renowned photographers Michael Lavine, Satoshi Saikusa, David LaChapelle and Michel Comte. She launched her career as a fashion photographer in Paris where she spent a decade developing her aesthetic and her ability to connect authentically with her subjects.

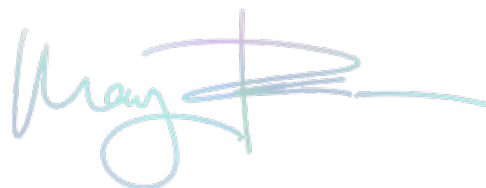
Rozzi's photographic writing expresses her deep nature: intuitive, visual, sensitive, elegant, empathetic, receptive, available, deep, generous, gentle, frank, daring and engaged.

These qualities guide her creative approach and imprint her work. Her inclination to enter into symbiosis with the artists and models she photographs collides with us as viewers.

Rejecting the dualism of form and subject or mind versus body, she seeks, instead, to capture the synergy cultivated between her artistic vision and that of her models'. Her immediate ability to find common ground and to make physical the field of emotions runs through the instant of a photo taken, filling her portraits with truth and humanity.

Rozzi vividly captures the paradigm shifts that intrinsically shake up our society and contribute to conversations about identity with a diversity of positive voices expressed and celebrated on the west coast of the United States.

“ Politically, the world is fragmented. Recent events have demonstrated that change is most definitely the only thing we can be sure of in this moment. ... We want to empower women by celebrating their achievements, and strive for the creation of an influential voice of equality in our future society ”



REMEDES GALERIE

REMEDES GALERIE is available to welcome you by appointment to present the exhibition and / or arrange an interview with **Mary Rozzi**.

C O N T A C T

lila rouquet +33 (0)6 25 80 17 79

timothée montabert +33 (0)6 63 35 79 15

www.remedes-galerie.com

143, rue du Temple
75003 Paris